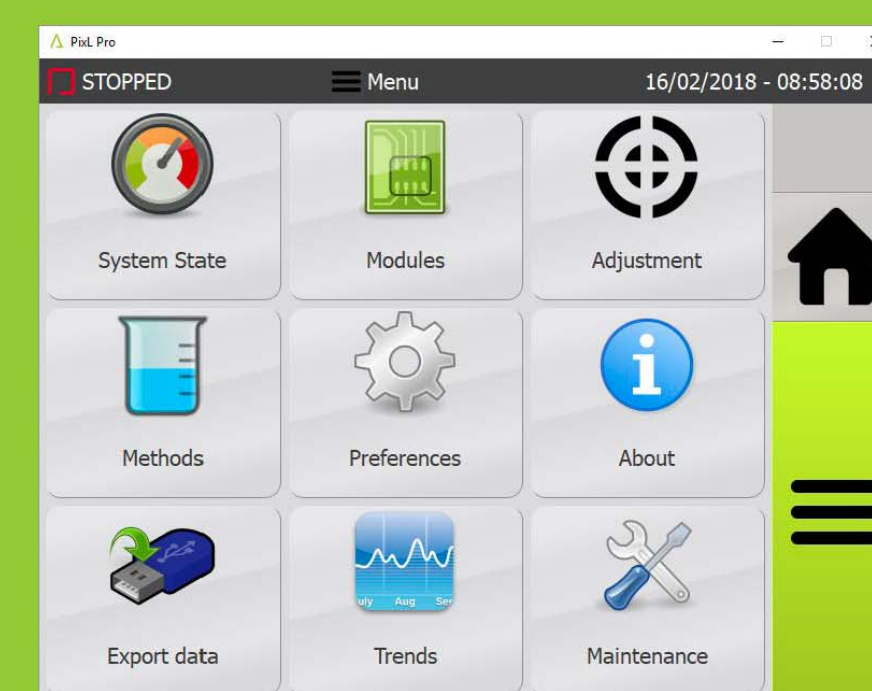
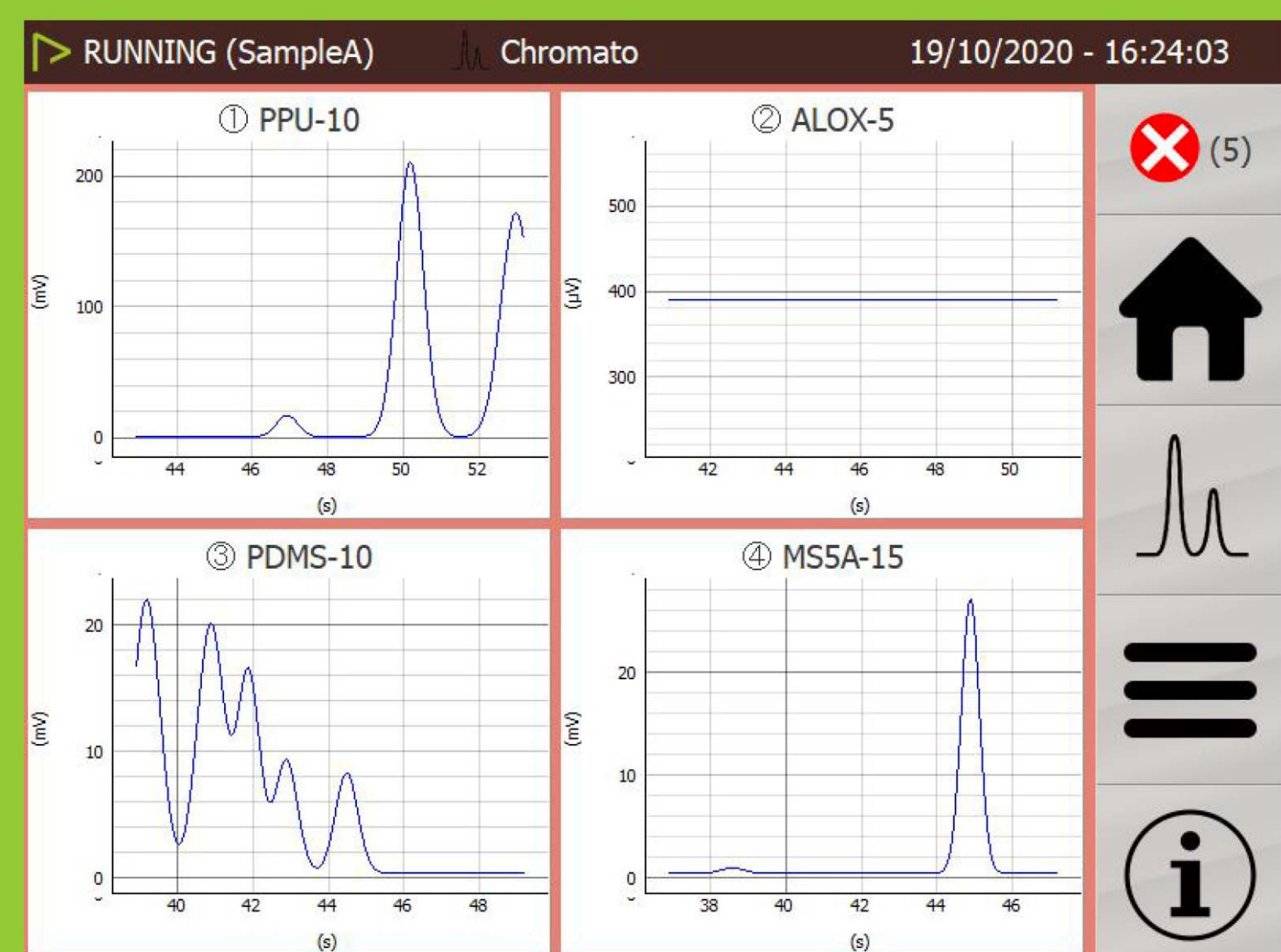


# Gas process monitoring with CHROMEX200/400 Micro GC analyzer



- 2/4 analytical modules
- 1 sample input
- 1/2 carrier gas inputs
- PCS/HHV for natural gas & Biomethane certification
  - OIML R140 / WELLMEC / ISO6976 norms
- From H2 to C9+ elution & up to C32+ with NGD detector
- Atex/IECEX Certified
- Operating temperature range -10°to +50°C